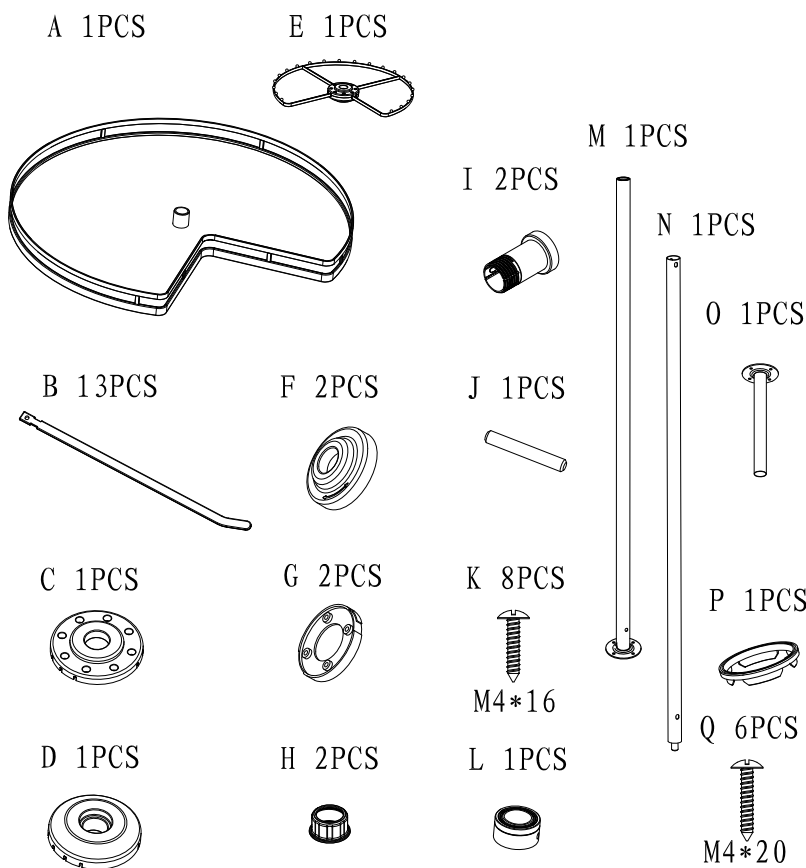


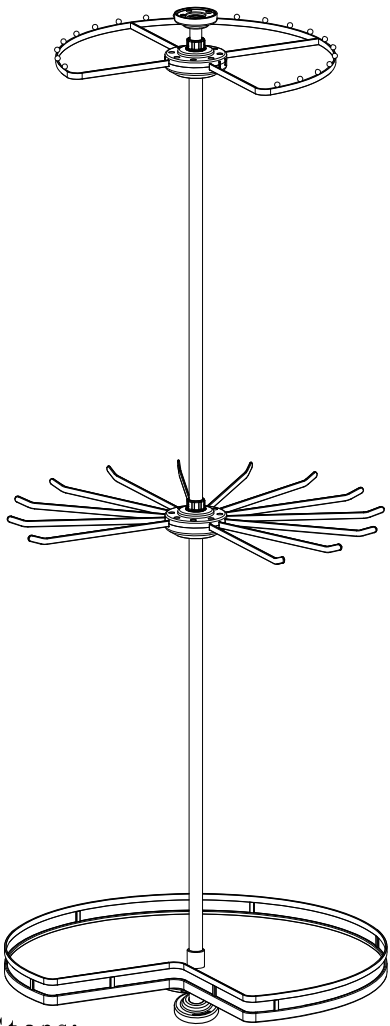
Assembly Instruction

Component List:



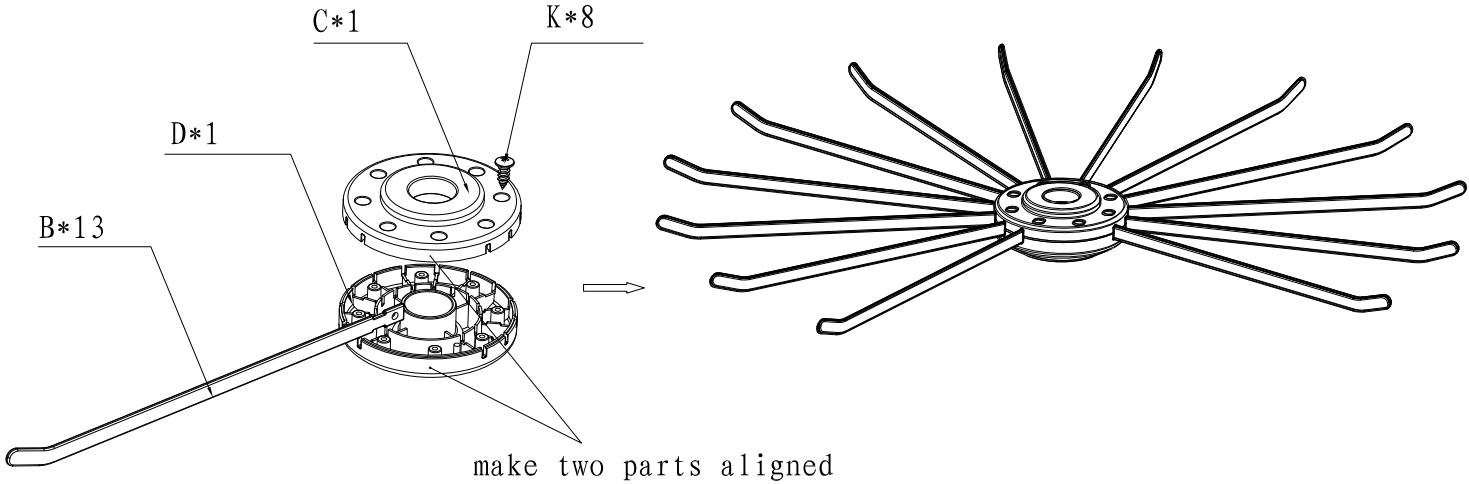
specification mm	Cabinet Inner Width
Ø710*H1910-2110mm	≥ 764mm

Product Drawing



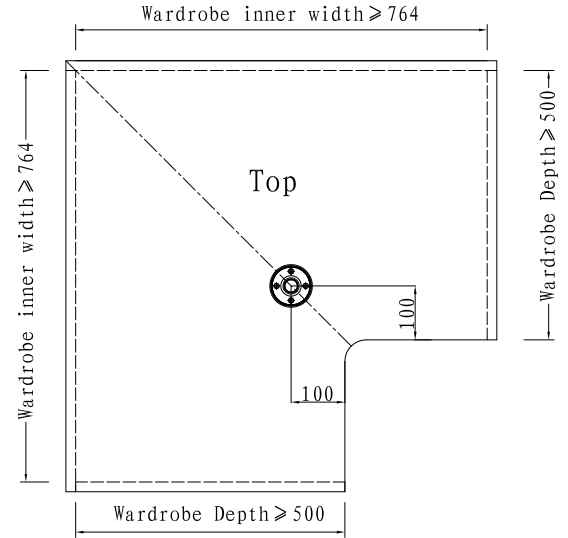
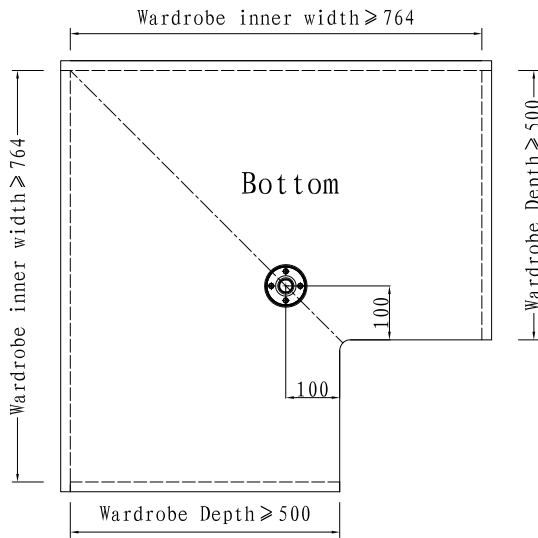
Assembly Steps:
Pls assemble the product following the steps in order

1. Installation for trousers hanging rack



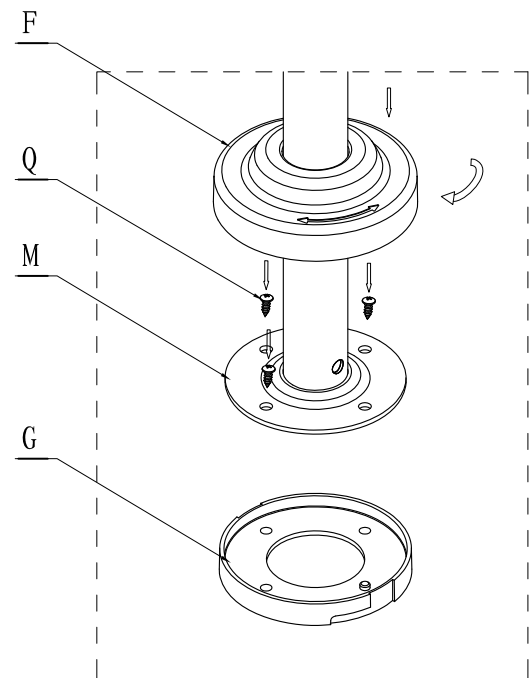
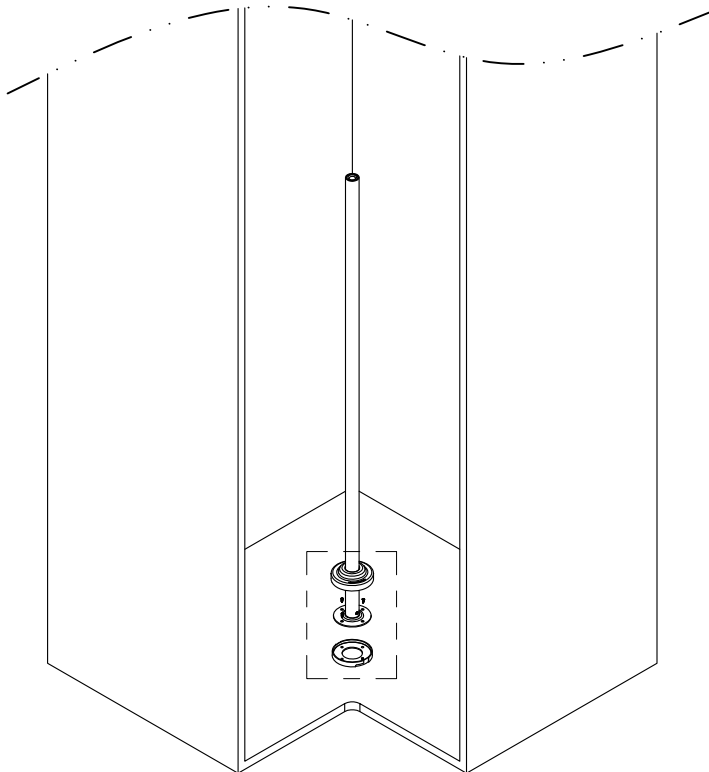
Assembly Instruction

2. Drill the holes according to the size instruction on the kraft



2

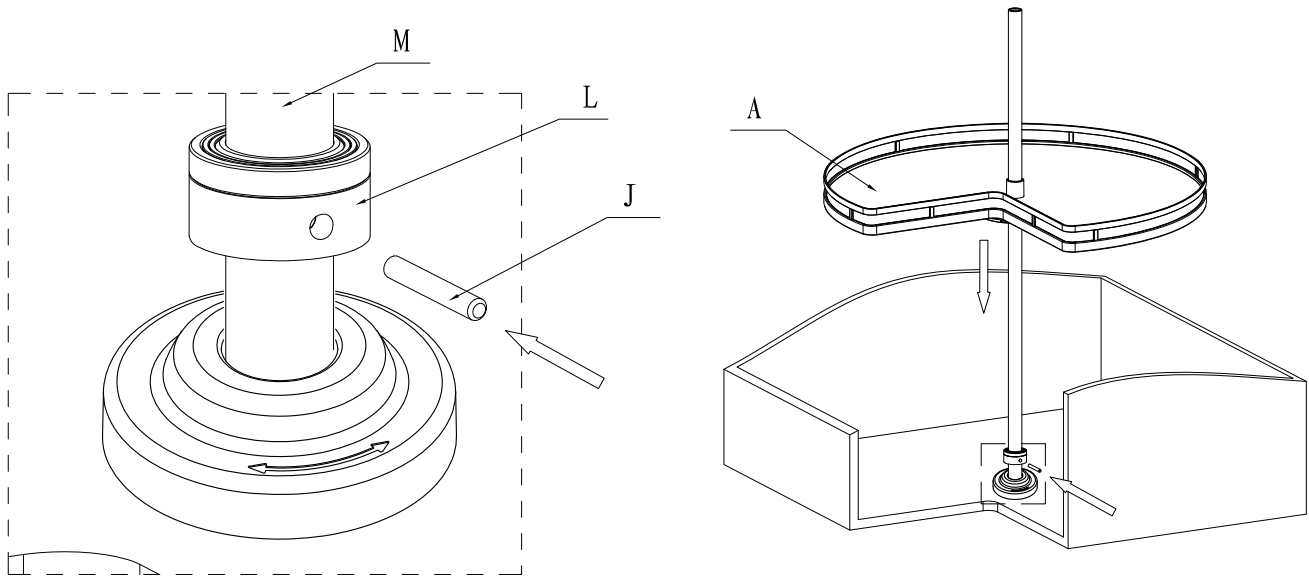
3. Fix M, G on the bottom board with screw Q, and cover with F, Fasten it.



3

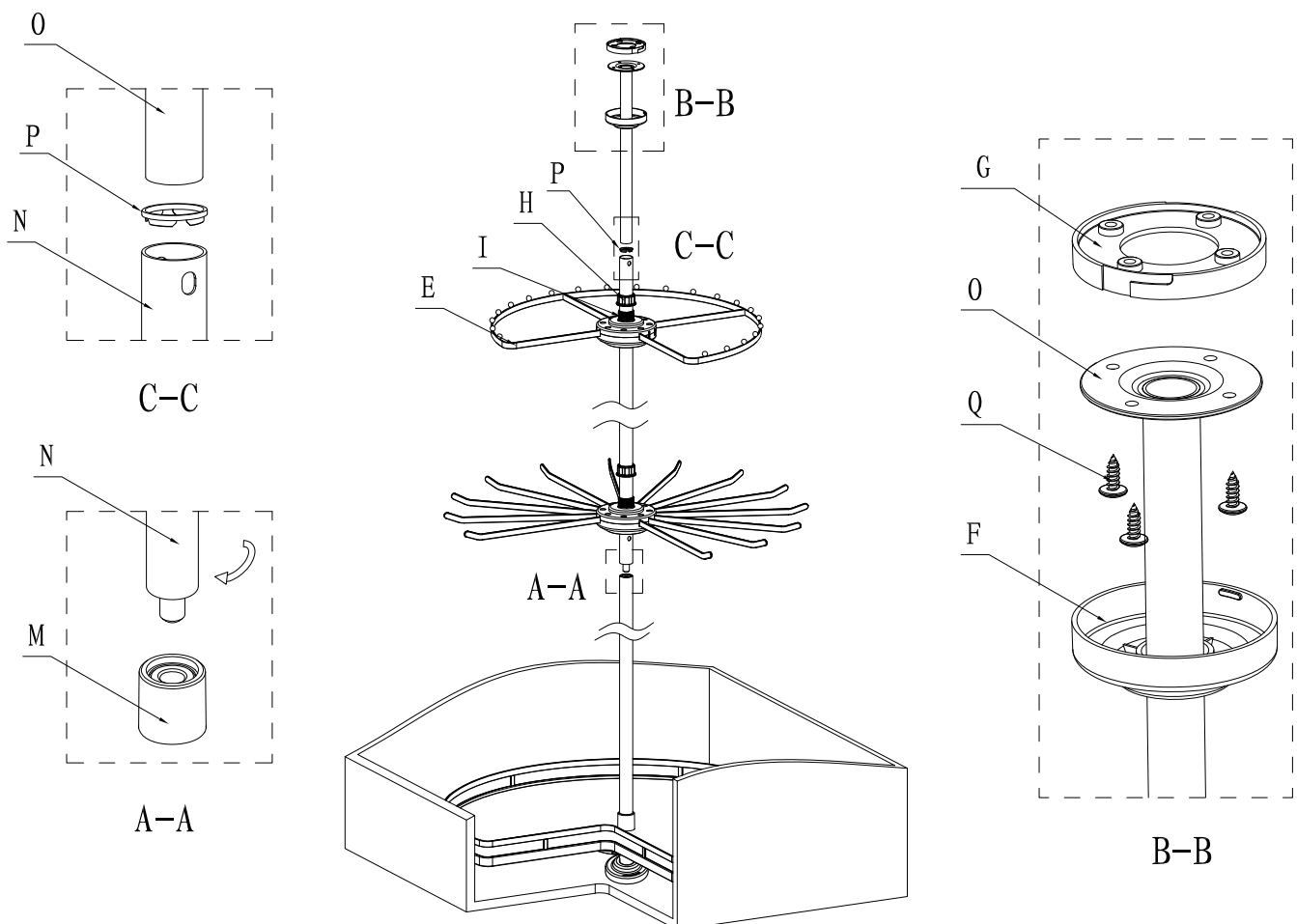
Assembly Instruction

4. Put M into L, and insert J into the hole of L, put Plate A.



4

5. Fix the components one by one in order according to the following drawing and lock O and G onto the top board of wardrobe with screw Q



5

Assembly Instruction

6. Insert part I into the holes of upright pipe, rotating H and make it fastened.

